



VISARIS 360

DIGITAL RADIOLOGY WORKFLOW SOLUTION



VISARIS

VISARIS 360

PROVIDES A RANGE OF **DIAGNOSTIC
WORKFLOW MODULES** THAT INCLUDE:

- Image archive and communication servers (PACS)
- Web-based radiology workflow system
- Diagnostic radiology workstations (reading stations)
- Advanced DICOM services including modality scheduling (MWL)
and exam status monitoring (MPPS) servers
- Advanced results export modules such as Patient disc publishing, printing etc.

DEPLOYMENT AND LICENCING MODEL

VISARIS 360 **DIAGNOSTIC RADIOLOGY** **WORKFLOW SOFTWARE** HAS SCALABLE DEPLOYMENT:

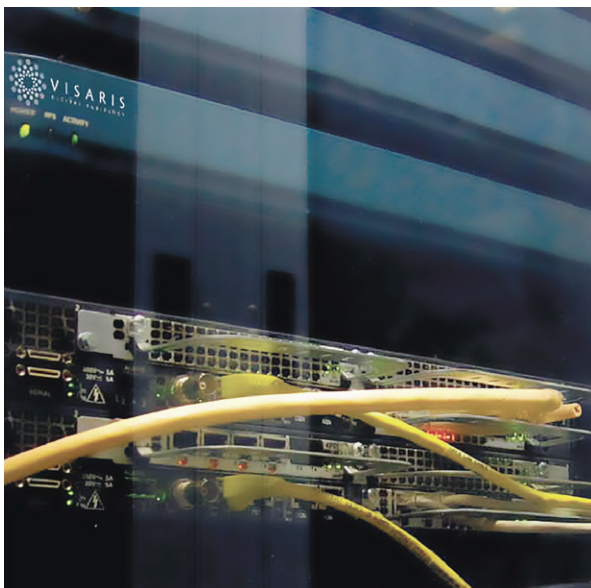
- Visaris 360 Start package, offering a cost effective solution for small practices running a single Visaris DR device and a limited number of viewing stations
- Range of fully scalable server and viewing station extensions that can be tailored to specific needs of enterprise level healthcare providers at any time

Beginning with a start server package, Visaris360 can be extended by adding desired functionality enabling workflow server modules, client access licences for further modalities, radiology workstations and web workflow module client access (user) licences (CALs). Workflow user licences entitle users to access all currently active workflow server modules.

Visaris360 solutions are further scaled through an annual study model where a number of annual “DICOM Study Volume” licences is purchased that matches the current workload of the organisation. These can be extended at any time.

VISARIS 360 SERVER

Visaris 360 Server is a department-wide diagnostic workflow solution providing image and data archiving, search, access and display. Enrol patients onto the system, create and schedule exams on the devices, search for patients and exams, interactive exam time-plan, see the status of diagnostic procedures, access and export diagnostic results.



VISARIS 360 PACS

PACS DICOM Archive

Patient, exam and image database with archive functionality through DICOM C-Find/CStore/C-Move SCP communication. Allows digital devices to store and radiologist workstations to access and download DICOM images. Support for advanced and basic DICOM Query database search. Support for multiple modalities DX, CR, US, CT, MX, MR etc. Configurable image storage arrangement. Storage compression and configurable image compression support. Integrated remote support tool (Teamviewer). One modality (device) and one reading workstation client access licences included.

DICOM Storage Commitment

DICOM Communication fidelity module that makes sure images are transferred successfully between the PACS archive and digital devices (modalities) and radiologist workstations.

PACS Admin and Service

Administration service module for the PACS, manage: storage space, users, DICOM connections to modalities/workstations. One admin access user.



VISARIS 360 WORKFLOW



VIEW 360

Web based image and diagnostic report display module. Used for displaying (compressed and non-compressed) diagnostic images and associated radiology reports to clinicians. A basic range of image manipulation tools such as zoom, contrast/brightness etc. Supports basic display of a range of **2D** and **3D** modalities.

REPORT 360

Web Report Creation and Templating

Web based tools for creation of diagnostic reports; creation of text and audio reports; creation and selection of pre-defined report templates; recording of audio reports; ICD 10 diagnosis classification; DICOM structured report structure; creation of institution customised report forms

Web Report Transcription Management

Web based management of audio (dictated, AU modality) diagnostic reports. Search and transcribe (type) dictated reports as well as tools to compare audio and transcribed versions of the report and perform report verification. Intended for transcriptionists and diagnostic radiologists (report verification).

EXREPORT 360

Patient Disc (CD/DVD) Publishing and Archive Backup

Optical disc creation module allowing burning of patient images with printed disc surfaces (patient and image data, department, time-date etc.). Allows automated image database back-up onto optical discs (DVD) through one-click archive function (write multiple DVD's). Requires disc publisher hardware module on the system.

Report and Image Paper Printing

Printing of images and created reports on network printers

LINK 360

HIS Broker Service

Integration module that allows loading of worklists and patient data from existing hospital information systems. Supporting a range of integration formats including HL7, GDT and others the service turns HIS exam requests into DICOM Modality Worklists that are further transferred to imaging modalities.

PACS Forwarding

DICOM forwarding service automatically sends copies of images to remote PACS archives and workstations; interactive tools for monitoring of transfer status and control of the transfer actions.

Document Management

Patient document management; uploading and linking of documents to patients and exams (pre-exam questionnaires, assessments ...); display of attached document by patient and exam.

SCHEDULE 360

Modality Worklist Creation

Web based exam set-up on imaging devices with database of supported procedures for each device, automated or manual scheduling, accession no. assignment etc. Procedure codes loaded automatically into modalities (devices) with patient data.

Exam Status Monitoring

Link to DICOM MPPS service with real-time exam status updates both in exam lists and on the time schedule plan (started, on-going and finished diagnostic procedures).

DICOM MWL Modality Worklist Server

DICOM communication module for automated exam set-up on imaging devices. Procedure codes entered through RIS automatically loaded into modalities (devices) with patient data. Connects modalities (devices) and server.

DICOM MPPS Server

Integrated DICOM MPPS service for real-time exam status updates (started, on-going and finished diagnostic procedures. Connection to modalities (devices) and diagnostic workstations in the network.

ADMIN 360

Advanced PACS and Database Administration

Administration of patient, exam and image database;
Tools for deleting, moving and editing patients data and DICOM images/series/studies; changes to patient demographics; merging of patients and associated data; reassignment of images/series/studies between patients/studies/series; propagation of database changes through images;

Image Import

Thick client tool for importing external DICOM images (external modalities, CD/DVD, scanned, other PACS...) from file system into database (PACS);

Material Monitoring

Monitoring and logging of material usage within the system (contrast etc.);

Advanced PACS Statistics Reporting

Reporting server, with customisable reports* on system use, data, transactions ...





V I S A R I S

Visaris, Batajnički drum 10, deo 1B, 11186 Zemun, Belgrade, Serbia
Tel: +381 11 2017 600, Fax: +381 11 2017 670, info@visaris.com

www.visaris.com